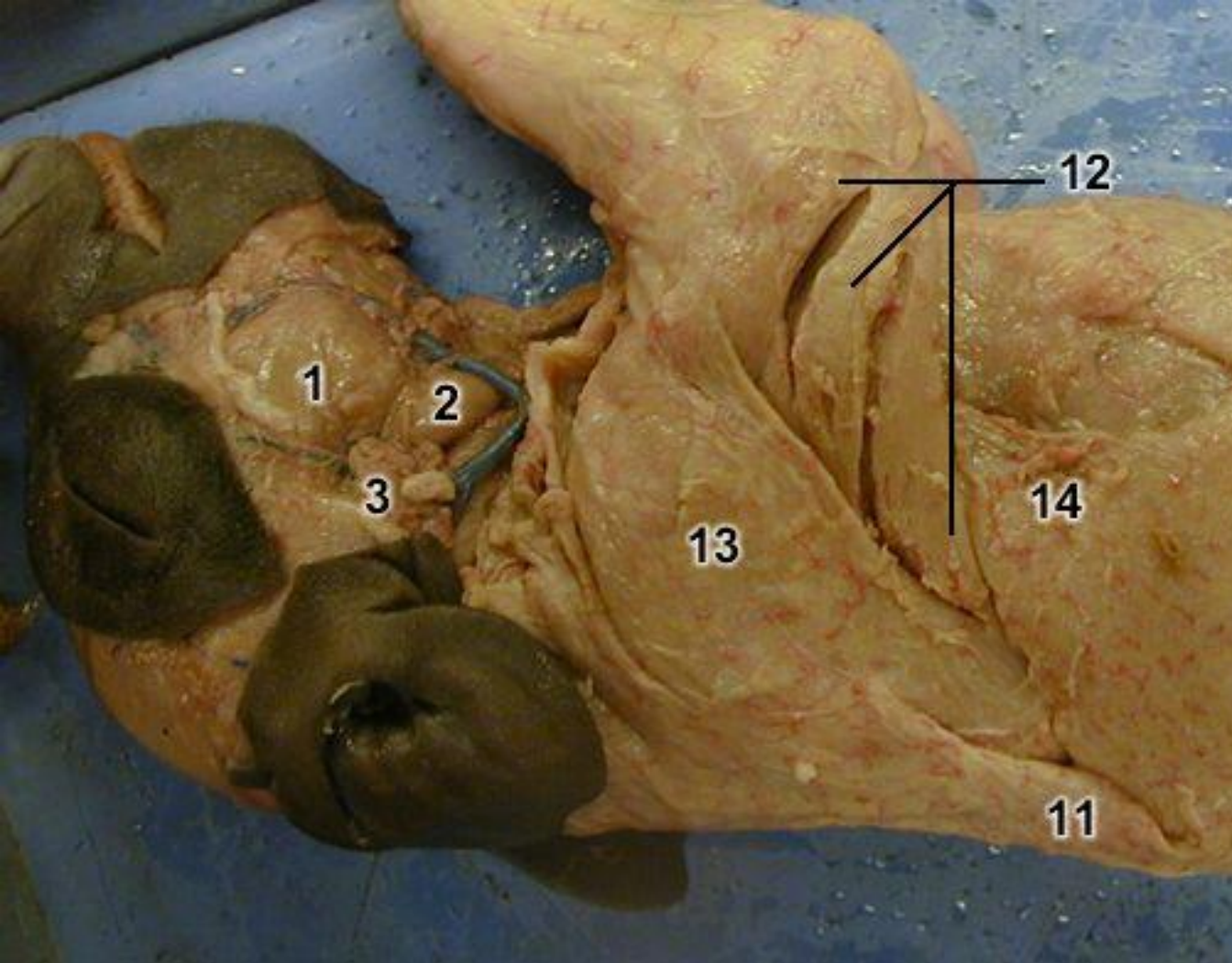


Wilbur Muscles

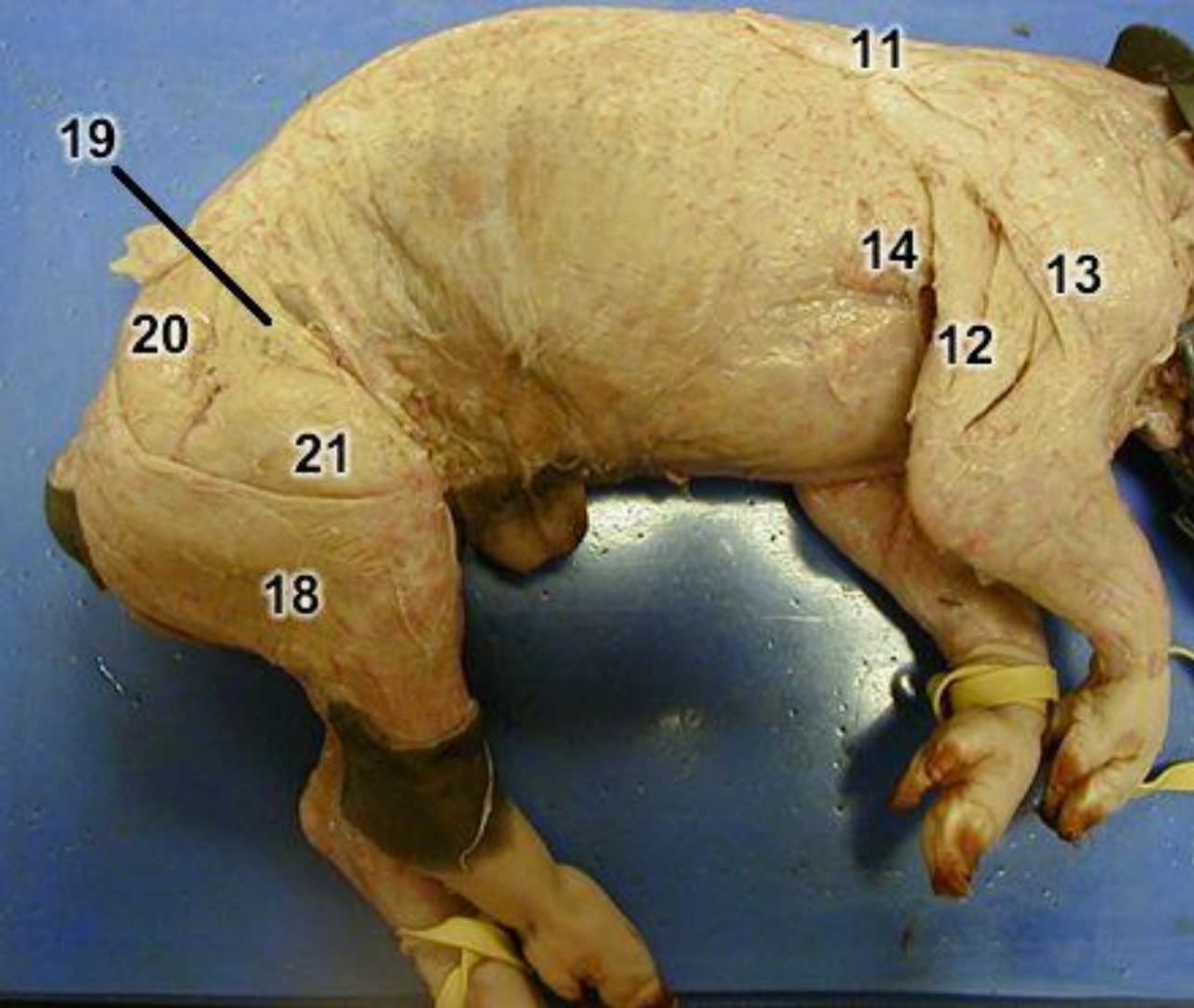
Remember you are only responsible
for those on your list



1. Masseter
2. Submaxillary gland (Mandibular gland)
3. Parotid gland
4. Sublingual gland
5. Cleidomastoid muscle
6. Brachiocephalous muscle
7. Sternomastoid muscle
8. Sternohyoid muscle
9. Omohyoid muscle
10. Sternothyroid muscle
11. Trapezius muscle
12. Triceps brachii muscle
13. Deltoid
14. Lattissimus dorsi muscle
15. Digastric muscle
16. Myloheid
17. Pectoralis

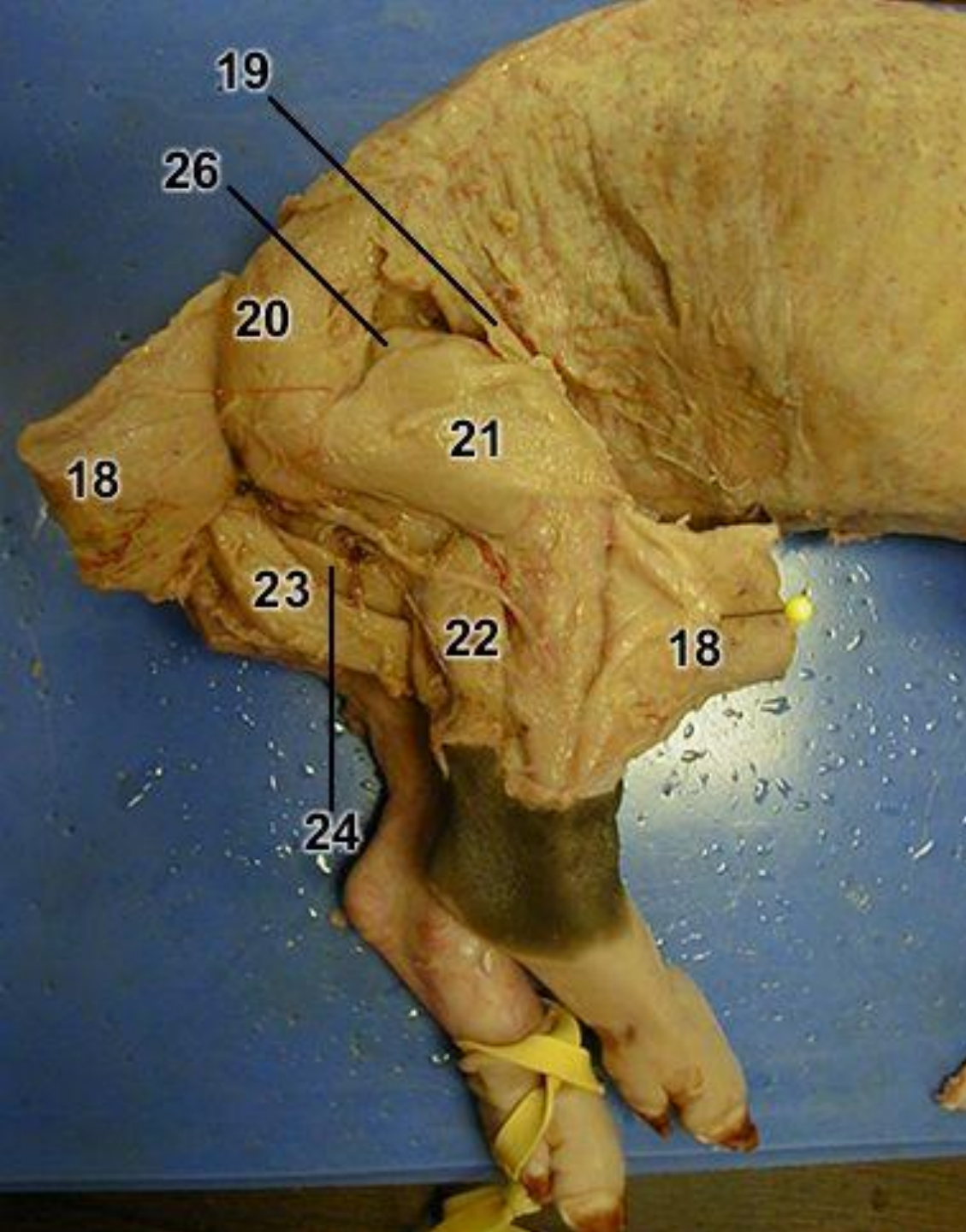


1. Masseter
2. Submaxillary gland (Mandibular gland)
3. Parotid gland
4. Sublingual gland
5. Cleidomastoid muscle
6. Brachiocephalous muscle
7. Sternomastoid muscle
8. Sternohyoid muscle
9. Omohyoid muscle
10. Sternothyroid muscle
11. Trapezius muscle
12. Triceps brachii muscle
13. Deltoid
14. Lattissmus dorsi muscle
15. Digastric muscle
16. Myloheid
17. Pectoralis

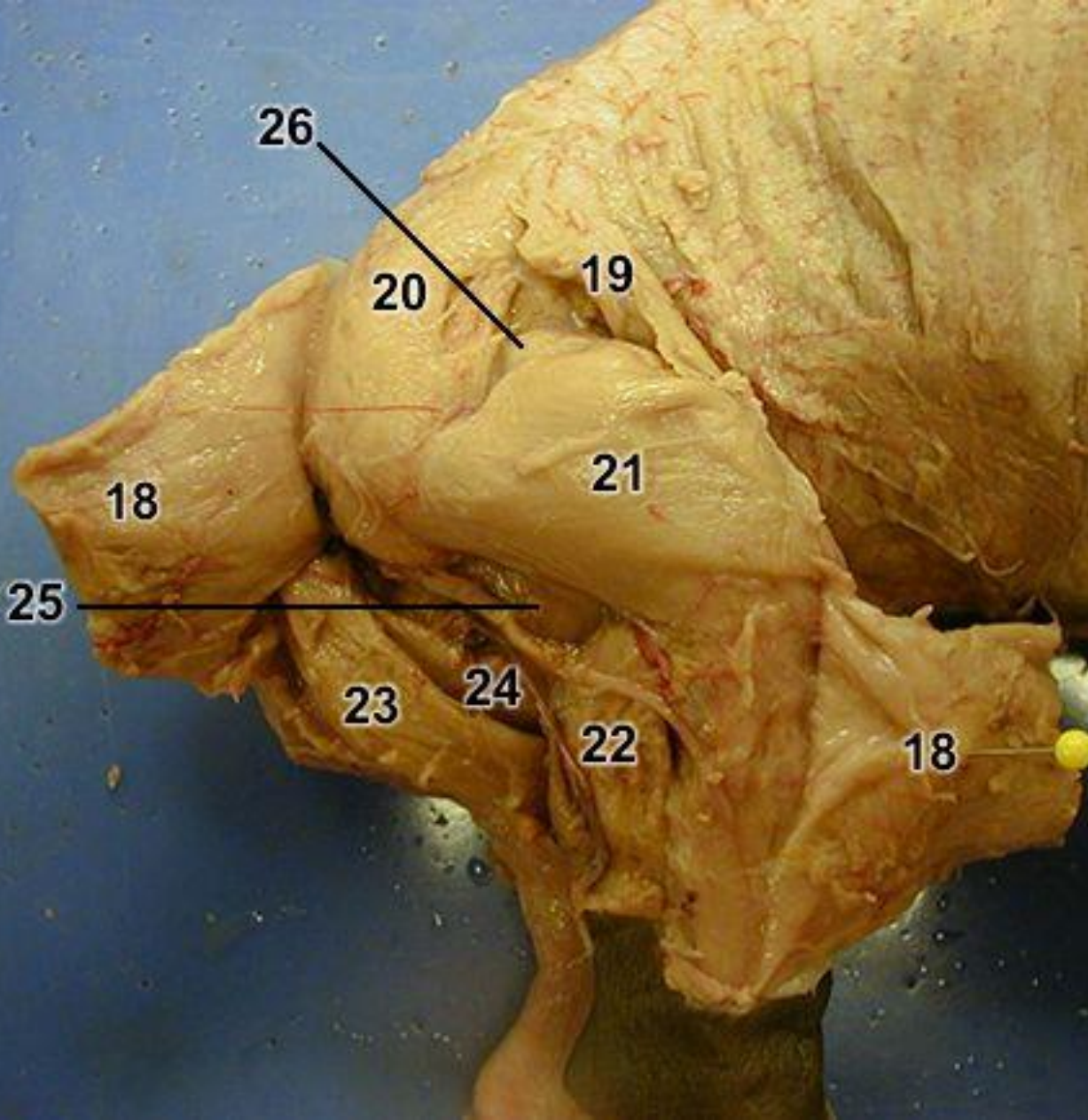


- 11. Trapezius
- 12. Triceps brachii
- 13. Deltoid
- 14. Latissimus dorsi

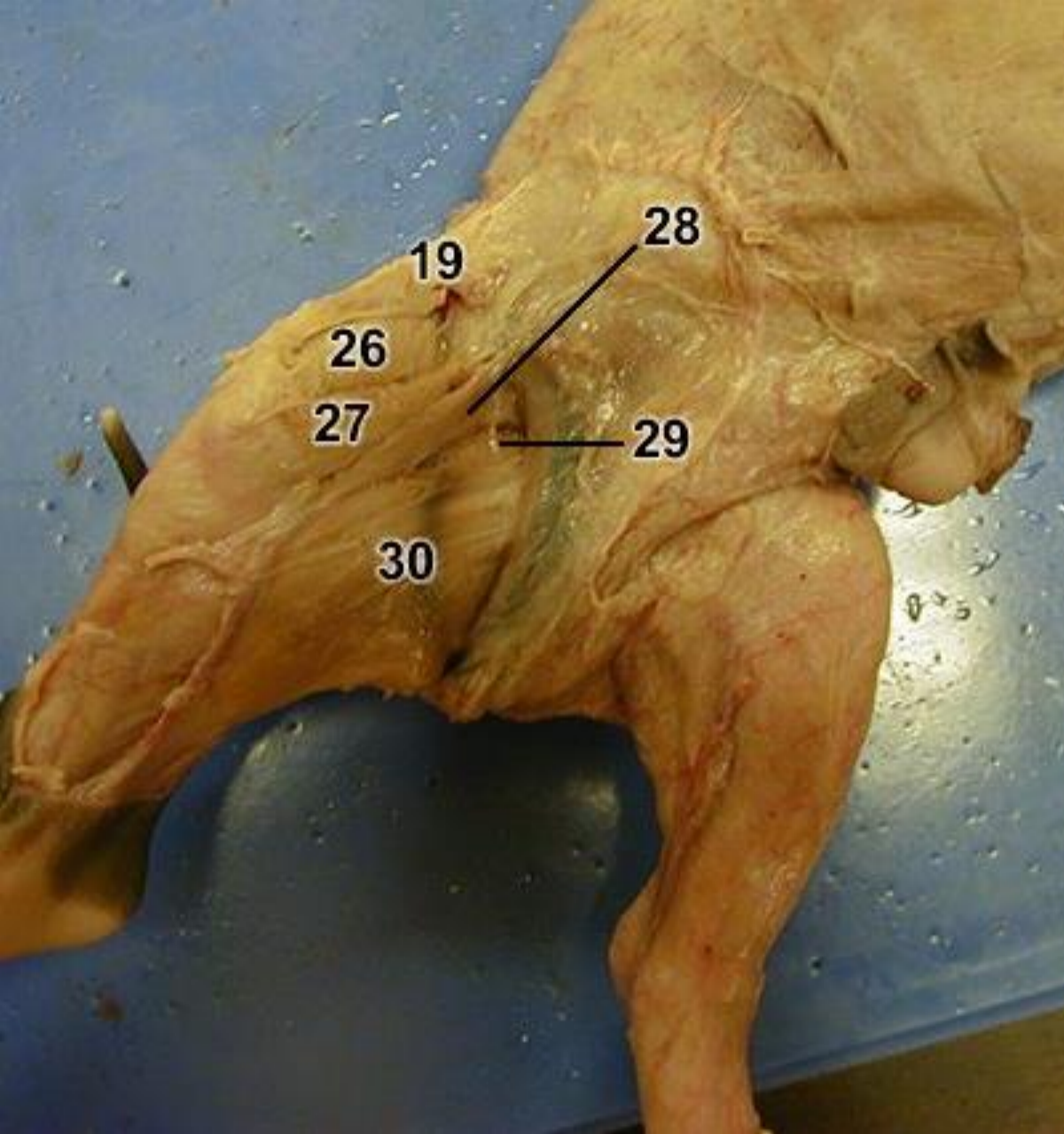
- 18. Biceps femoris
- 19. Tensor fasciae latae
- 20. Gluteus medius
- 21. Vastus lateralis



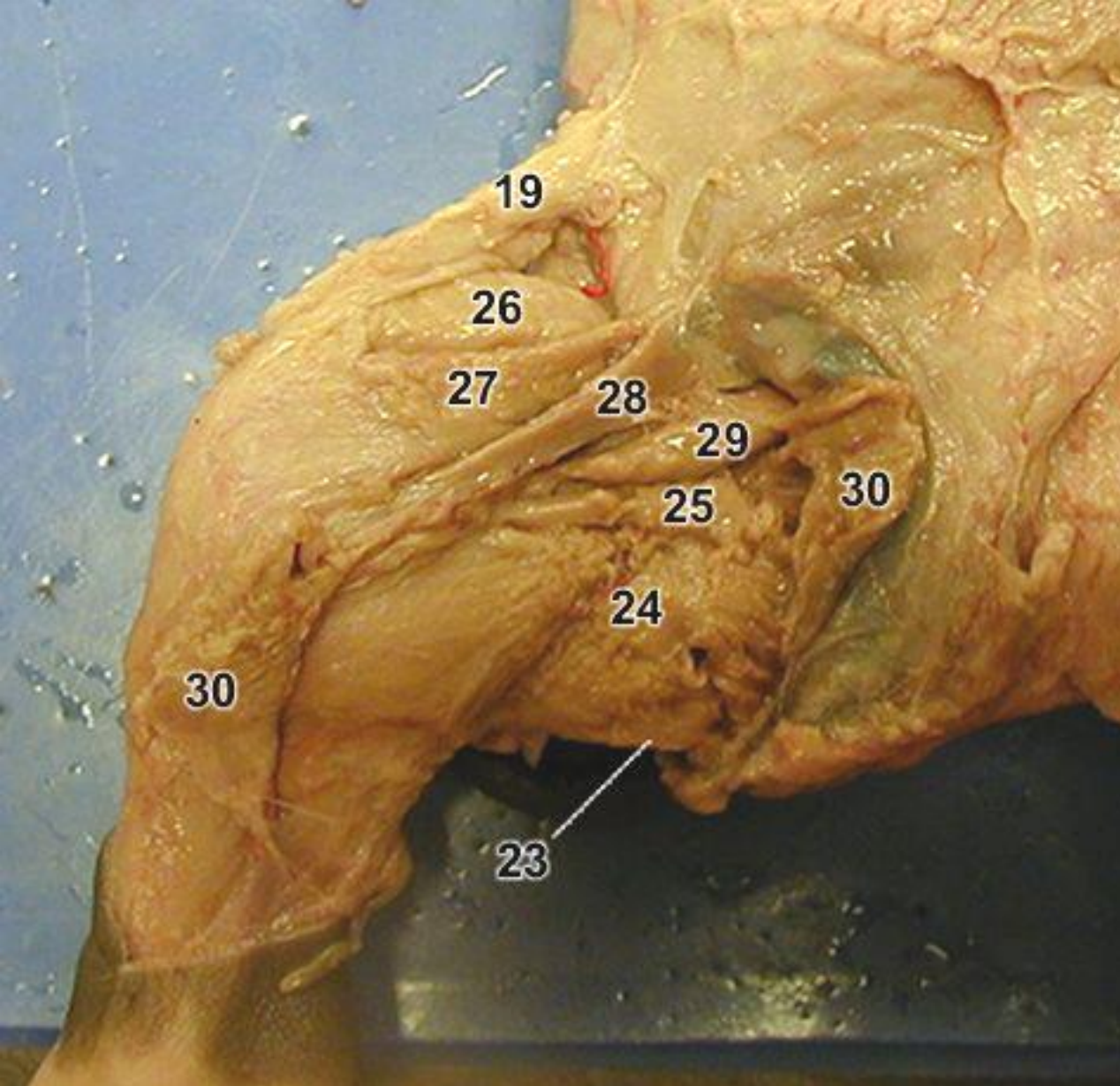
- 18. Biceps femoris muscle
- 19. Tensor fasciae latae
- 20. Gluteus medius muscle
- 21. Vastus lateralis muscle
- 22. Gastrocnemius muscle
- 23. Semitendinosus muscle
- 24. Semimembranosus muscle
- 25. Adductor muscle
- 26. Rectus femoris muscle
- 27. Vastus medialis muscle
- 28. Sartorius muscle
- 29. Pectineus muscle
- 30. Gracilis muscle



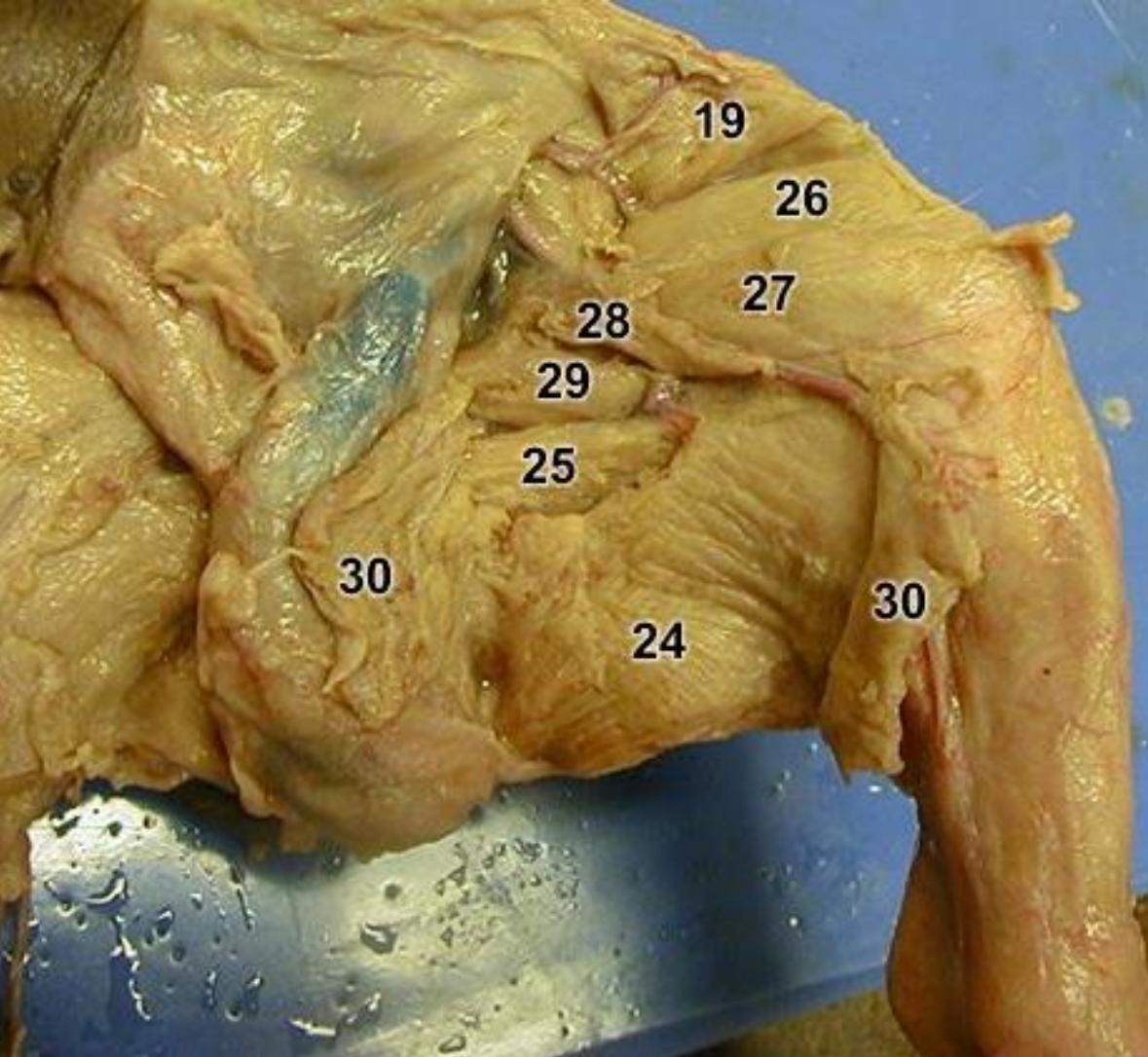
- 18. Biceps femoris muscle
- 19. Tensor fasciae latae
- 20. Gluteus medius muscle
- 21. Vastus lateralis muscle
- 22. Gastrocnemius muscle
- 23. Semitendinosus muscle
- 24. Semimembranosus muscle
- 25. Adductor muscle
- 26. Rectus femoris muscle
- 27. Vastus medialis muscle
- 28. Sartorius muscle
- 29. Pectineus muscle
- 30. Gracilis muscle



- 18. Biceps femoris muscle
- 19. Tensor fasciae latae
- 20. Gluteus medius muscle
- 21. Vastus lateralis muscle
- 22. Gastrocnemius muscle
- 23. Semitendinosus muscle
- 24. Semimembranosus muscle
- 25. Adductor muscle
- 26. Rectus femoris muscle
- 27. Vastus medialis muscle
- 28. Sartorius muscle
- 29. Pectineus muscle
- 30. Gracilis muscle



- 18. Biceps femoris muscle
- 19. Tensor fasciae latae
- 20. Gluteus medius muscle
- 21. Vastus lateralis muscle
- 22. Gastrocnemius muscle
- 23. Semitendinosus muscle
- 24. Semimembranosus muscle
- 25. Adductor muscle
- 26. Rectus femoris muscle
- 27. Vastus medialis muscle
- 28. Sartorius muscle
- 29. Pectineus muscle
- 30. Gracilis muscle



- 18. Biceps femoris muscle
- 19. Tensor fasciae latae
- 20. Gluteus medius muscle
- 21. Vastus lateralis muscle
- 22. Gastrocnemius muscle
- 23. Semitendinosus muscle
- 24. Semimembranosus muscle
- 25. Adductor muscle
- 26. Rectus femoris muscle
- 27. Vastus medialis muscle
- 28. Sartorius muscle
- 29. Pectineus muscle
- 30. Gracilis muscle